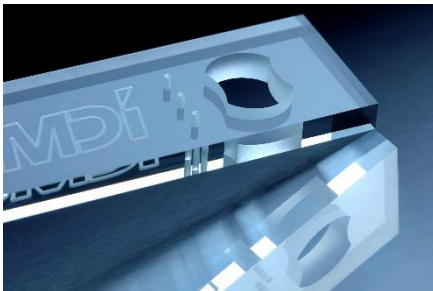


# Glass Processing in Perfection

If you are looking for a highly innovative glass separation process, we offer great experience and new ideas for your specific glass processing applications. Our patented technologies, to be found in our cutting tool as well as in our laser cutting systems, ensure state-of-the-art processing and highest quality for your products.



## Company History

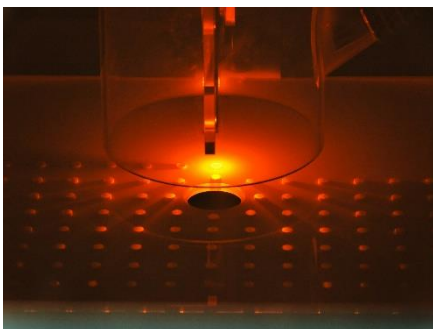
Our Company was originally established in 2005 as a joint venture between the Japanese machine and tool supplier for glass processing Mitsuboshi Diamond Industrial Co., Ltd. and the manufacturer for special glass SCHOTT AG. Since March 2015 we are a 100% subsidiary of Mitsuboshi and we are serving the European and American markets primarily.

Our customers benefit from more than 80 years of experience in traditional glass cutting, more than 20 years of experience in laser cutting and the substantial know-how our company has obtained working with glass.



## Our Products

- glass processing machines and systems equipped with laser technology
- glass cutting machines equipped with wheel technology
- patented cutting tools, axles, and holders for use in industrial production
- manual glass cutter
- system integration
- job shops of small batches and new products
- R&D cooperations



## Our Markets

- electronic and home applications
- OLED
- touch panel und flat panel display
- automotive
- optical glasses
- architectural
- photovoltaics / solar
- biomedical



# Opening New Possibilities

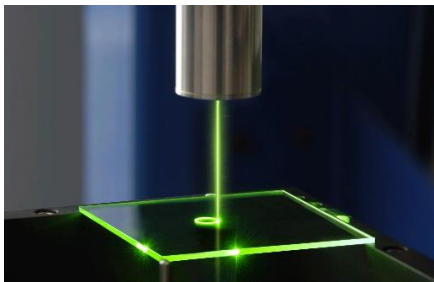
We develop innovative process technologies for products based on brittle materials. It is our policy to work closely with our customers in the early stages of development in order to be able to provide the optimum combination of process and equipment.



## Glass Cutting with CO<sub>2</sub> Laser

Whenever high value glass products need to be separated precisely and cleanly or require highest edge strength after separation, our CO<sub>2</sub> laser cutting technology is the right choice.

Processing and handling of ultra-thin glass becomes possible with this technology as well.



## Laser Drilling with Green Laser

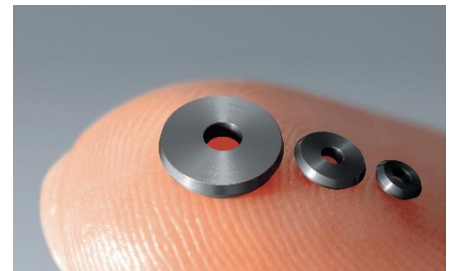
The Green Laser (532 nm wave length) can be controlled very precisely which ends up in high accuracy and a wide range of processing capabilities. This allows processing of glass in multiple ways by ablation.

Drilling of holes in various sizes, diameters, and even shapes is easy to implement. Edge chamfering, cutting, marking, and grooving of glass can be done with this technology as well as coating removal.

## Cutting with APIO® and Penett® Wheels

Our patented MDI cutting wheels offer highest cutting quality in combination with a long lifetime and enjoy worldwide popularity.

Due to their wheel structure with small notches, the wheels create a median crack up to 90 % of the glass thickness, which effectively simplifies the breaking process. Compared to conventional cutting wheels, the quality at crossing points as well as at the beginning of the scribe line shows substantial improvements.



**MDI Advanced Processing GmbH** would like to inform you in detail about our products and demonstrate how incorporating Green Laser processing will benefit your company.

Please contact us if you should have any questions or if you are interested in a live demonstration of our technologies.

MDI Advanced Processing GmbH  
Obere Austraße 6  
55120 Mainz  
Germany  
Phone: +49 (0) 61 31 / 73 21-0  
Fax: +49 (0) 61 31 / 73 21-101  
E-mail: [sales@mdi-ap.com](mailto:sales@mdi-ap.com)  
[www.mdi-ap.com](http://www.mdi-ap.com)